

Glue Down Installation

Hardened Wood XXL can also be installed with a full surface bonding using an approved adhesive as an alternative to floating installation.

Please note that when installing floors with full surface bonding all floor installations must be followed carefully at all times, as well as general recommendations and instructions from the adhesive manufacturers must be followed.

We recommend the following products:

- **Bona:** Bona R 850, Bona R 850T, Bona Titan
- **Bostik:** Bostik Maxi Bond

All products are an elastic 1-component silane adhesive for wooden floors. When needing a moisture barrier we recommend the use of Bona R 590 together with Bona products. For Bostik Maxi Bond we recommend you contact Bostik technical support to identify the corresponding adhesive.

The recommendations for adhesives are based on extensive tests by the manufacturers. Due to the variability of on-site conditions, it is not possible to establish warranty claims based on the information provided. We cannot assume liability for any losses incurred in using the adhesive system. For that reason, we recommend that you test the adhesive yourself thoroughly before installing flooring, or contact the adhesive manufacturer's technical customer service.

IMPORTANT NOTE: Please review Owner Responsibility and Preinstallation and Jobsite Condition sections (Follow these steps before proceeding)

The choice of adhesive is dependent on the type of sub-floor and conditions associated with the buildings' construction. Only adhesive that is specifically recommended for hardwood flooring should be used i.e. adhesive containing the minimum amount of water.

The adhesive is applied using a course toothed trowel. The dimension of the teeth of the trowel is important. The adhesive should be applied in accordance with the manufacturers' instructions. Do not apply more adhesive than can be "worked" in the course of 10 – 15 minutes.

Installing Valinge Hardened floors with the Glue down method requires no expansion breaks in the floor and is not limited in size. A 1/2" expansion clearance from wall is till recommended.

Tools and Materials Required

- Chalk Line
- Hammer
- Tapping Block
- Wood flooring adhesive
- Recommended trowel from the adhesive manufacturer
- Expansion Shims
- Floor Protectors

Installation instructions

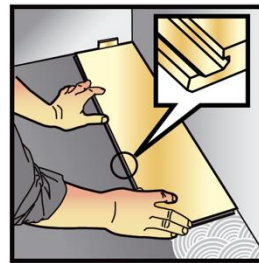
Step 1. Lay the first board with the tongue towards the wall and the groove facing outwards.

Recommends a clearance to the wall of 1/2" (1,5 mm per meter room width) min. 8 - 10 mm. Using starting wall as reference, snap chalk line on subfloor

Align straight edge (BOEN board or any solid material with straight edge) with chalk line and secure to subfloor.

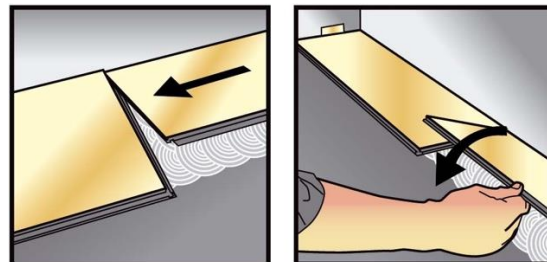
Start with tongue side facing wall and long groove side directly up against straight edge. Spread adhesive enough to cover one board width. Use only as much adhesive as can be used during manufacturer's open time of adhesive.

Lay board into adhesive.



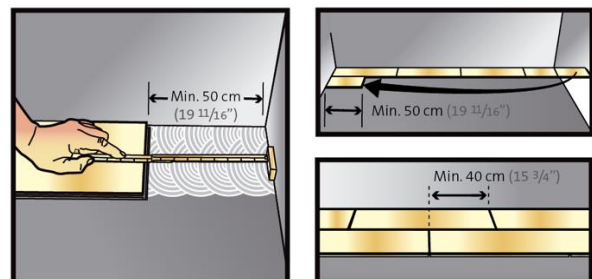
Step 2. The next board is installed at an angle (approx. 30°) against the end- joint and pressed down.

3. Continue in this way until the first row is installed.

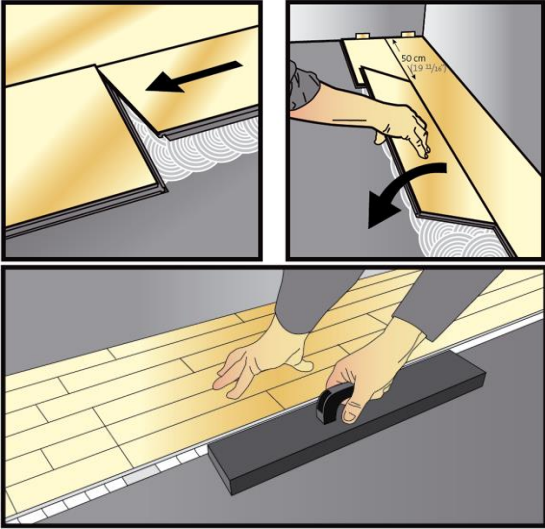


Step 4. Start the second row with the off-cut from the first row, which must be a minimum length of 50 cm. Click this board to the previous row.

Once first two rows are installed, ensure expansion gap between walls and boards are shimmed securely.



Step 5. Give the board a light tap with a wooden block while pressing down gently.



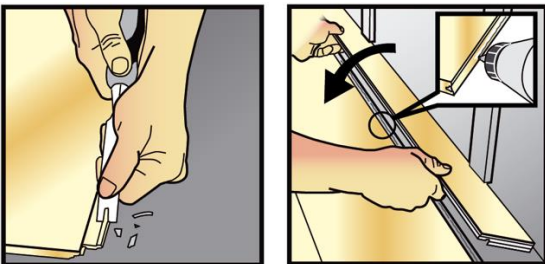
- Use plywood or hardboard when moving heavy appliances or furniture across floor
- Protective felt pads are recommended under furniture legs and protective carpets under caster chairs with hard wheels.
- Always use protective entrance carpets.
- Carpets should not be placed on floor during first 30 days of installation
- Please follow care and maintenance instructions at <https://Valingeflooring.com/Care&Maintenancxe>

Step 6. Enter the short end and fold down.

Step 7. Adjust the distance to the wall, after the first 2 - 3 rows have been installed.

Step 8. Use distance pieces or wedges.

9. Continue installation of the next row with the off-cut from the previous row, which must have a minimum overlap of 40 cm.



10. Apertures for piping etc. must be made as spacious as possible so as to allow for free movement of the floor. The apertures are then covered by pipe collars.

11. Skirting boards must be attached to the wall.

After Installation

- Sweep and vacuum floor
- Remove any excess adhesive or spots.
- Use the manufacturers recommended hardwood cleaners with a clean terry cloth mop.
- If the floor is to be covered, the floor should be thoroughly cleaned prior to covering to prevent grit damage to finish. **DO NOT USE TAPE.**
- Never Wet mop, damp mop, or clean your floor with water or other products. Do not use hardwood floor cleaning machines or steam cleaners.