

Glue-Down Installation

Nydree Maverick Flooring can be installed with full surface bonding using Nydree SB1587 adhesive or approved adhesive as an alternative to a floating installation. Please note that when installing floors with full surface bonding all flooring installation instructions must be followed carefully at all times, as well as general recommendations and instructions from the adhesive manufacturers must be followed.

Alternate adhesive products:

Bona: Quantum Flow & Quantum R851

All products are an elastic 1-component silane adhesives for wooden floors. These flooring adhesives also include moisture barrier options that utilize different trowel blades and adhesive coverages.

Notes on using flooring adhesive for Glue-Down:

- Always glue directly to the subfloor.
- Leave the required expansion gap between the floor and all walls.
- The tongue and groove must NOT be glued.
- Installing Nydree Maverick flooring with the Glue-Down method requires no expansion breaks in the floor and is not limited in size. A ½" expansion gap from walls and vertical obstructions is still recommended.
- Do not apply more adhesive than can be "worked" in the course of 10-15 minutes.
- To obtain a good final result it is very important to be precise in the installation of the first rows of planks. Always place the planks in the adhesive in front of the previous row then push and rotate them into place along the side and end of each plank.
- Immediately clean off any adhesive that may have spilled on the flooring during installation.

Tools and Materials Required

- Chalk Line · Straight Edge · Hammer
- Tapping Block
- Wood flooring adhesive & Recommended trowel
- Sliding Miter Saw / Jigsaw / Mega STRATICUT 400 Laminate Flooring Cutter
- Expansion Shims/Wedges
- Fine Pencil, Tape Measure & Square
- Floor Protectors
- Safety Glasses and NIOSH Approved Dust Mask

Installation Instructions

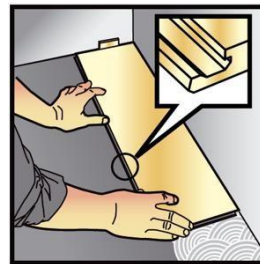
Step 1. Starting in the left corner of the room, lay the first board with the tongue towards the wall and the groove facing outwards.

Using the starting wall as a reference, snap a chalk line on the subfloor at plank width plus recommended expansion space.

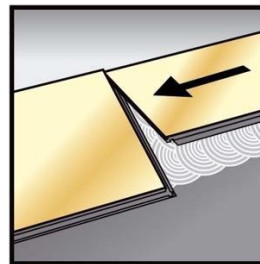
Nydree recommends an expansion space of 1/16" per 3.28 feet of room width. (minimum 3/8").

Using this chalk line, trowel glue from wall to chalk line. Only spread enough adhesive to cover one board length. Use only as much adhesive as can be used during manufacturer's adhesive open time. (Nydree SB1587 is about one hour at 70 °F and 50% relative humidity, but it is best to lay flooring into adhesive as soon as possible) Start with tongue side facing wall and long groove side directly up against chalk line.

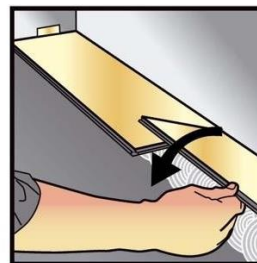
Lay board into adhesive.



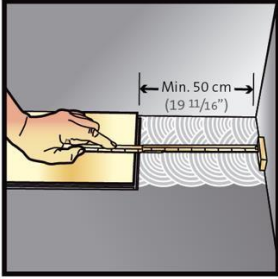
Step 2. The next board is installed at an angle (approx. 30°) against the end- joint and pressed down.



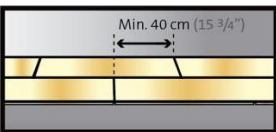
Step 3. Continue in this way until the first row is installed.



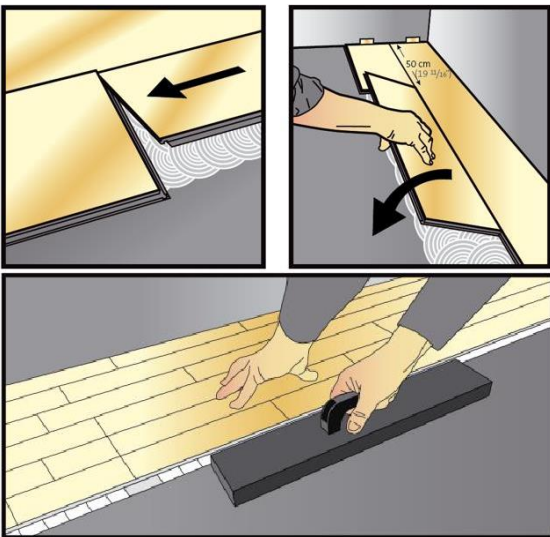
Step 4. At the end of the first row, measure the length of the last plank to fit. Be sure to leave expansion spacing at the wall.



Step 5. Snap another chalk line from the first row at plank width. Trowel adhesive to chalk line. Start the second row with the off-cut from the first row, which must be a minimum length of 50 cm. Click this board to the previous row.



Step 6. Second plank, second row. Line up the plank gently and tightly to the short end of the previous plank. Lower the plank down in a single movement. Make sure the planks are tight against each other. Press down the plank. If necessary, give the board a light tap with a wooden block while pressing down gently.

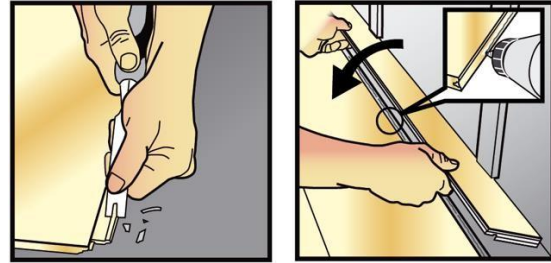


Step 7. Ensure that the short end is connected.

Step 8. Once the first two rows are installed, ensure expansion gap spacing between walls and boards are shimmed securely.

9. Continue installation of the next row with the off-cut from the previous row, which must have a minimum overlap of 40 cm.

10. When angling is not possible, remove the locking element/hook according to the picture below. Use white PVA glue to connect the planks. Position wedges between the glued plank and the wall.



11. Expansion spaces around piping etc. must be made as spacious as possible so as to allow for possible expansion of the flooring. The apertures are then covered by pipe collars or the expansion space is filled with color matched caulking.

12. Base molding must be attached to the wall not the flooring.

After Installation

- Sweep and vacuum floor before using it and daily as needed.
- Remove any excess adhesive or spots.
- Clean the floor before using it and regularly with Bona Professional Hardwood Floor and a clean terry cloth mop.
- If the floor is to be covered, the floor should be thoroughly cleaned prior to covering to prevent grit damage to finish. DO NOT USE TAPE.
- Never wet mop, damp mop, or clean your floor with water or other products. Do not use hardwood floor cleaning machines or steam cleaners.
- Use plywood or hardboard when moving heavy appliances or furniture across floor
- Protective felt pads are recommended under furniture legs and protective mats under caster chairs with hard wheels.
- Always use protective entryway doormats to help remove excess dirt/grit/sand and moisture from foot traffic.
- Rugs or mats should not be placed on flooring during first 30 days after installation.
- Most common stains/dirt can be removed using a Magic Eraser. Be careful not to scrub too hard.
- www.nydreeflooring.com